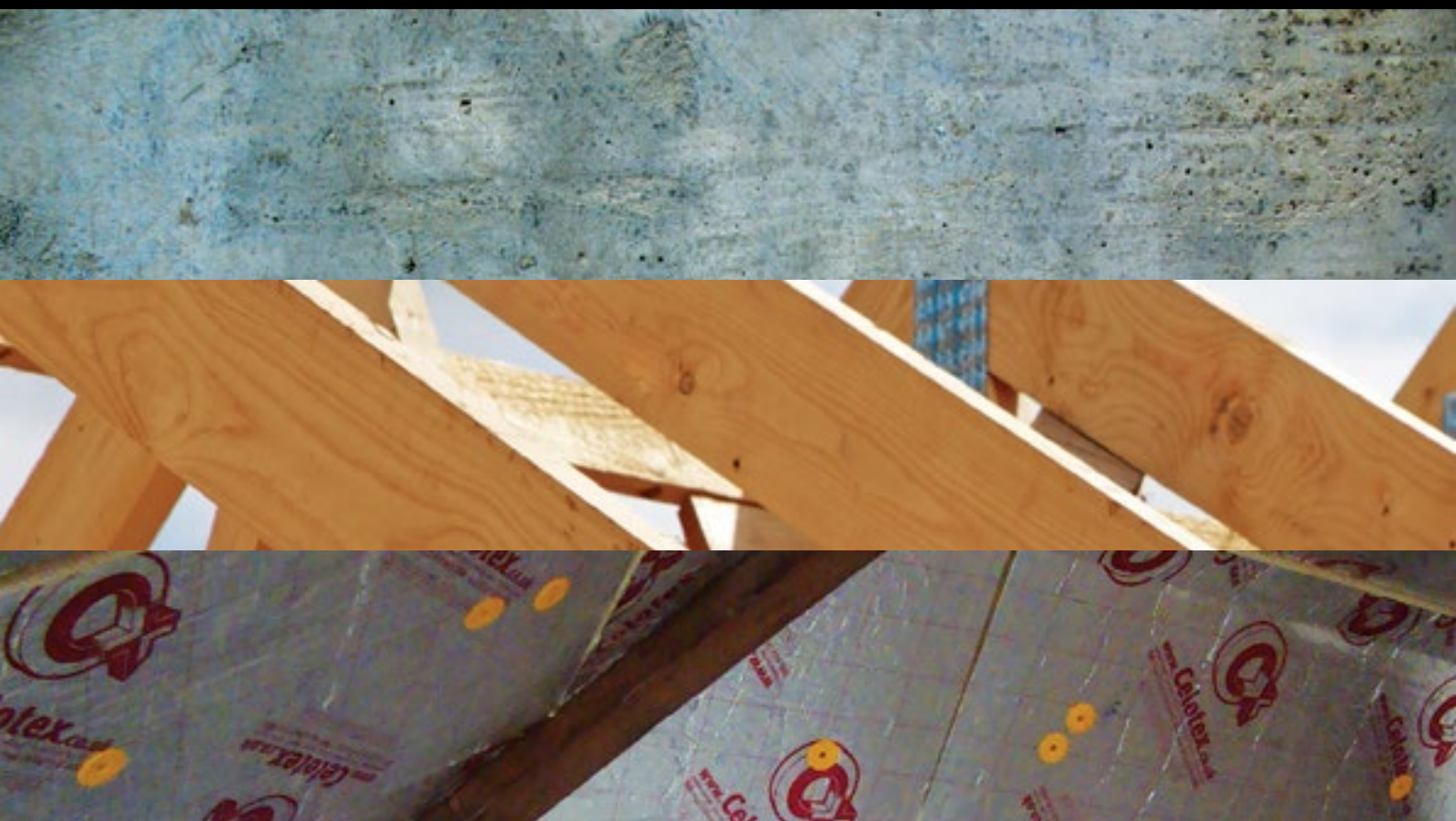




GAS & PAT Tools  
Product Guide 2014/15



Foreword

SG Fastening Systems specializes in the development and manufacture of Industrial Gas Nailers and PAT Tools for the construction industry. We pride ourselves in making our products both functional and technologically advanced, to enhance the users experience.

Our full program of Gas Nailers and PAT Tools covers many varied applications and are suitable for use in Concrete, Steel and Wood.

The innovative features of our Tools helps to maintain consistent performance and limit down time for servicing and general repairs.

We also offer a full range of consumables to compliment our Tools and offer a complete service to our customers.

Contents

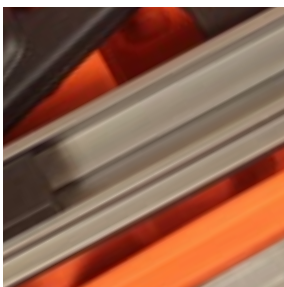
|                             |         |
|-----------------------------|---------|
| Concrete Gas Tools          | 4 - 7   |
| Insulation Gas Tools        | 8 - 11  |
| Wood Gas Tools              | 12 - 15 |
| Gas Consumables             | 16 - 17 |
| Powder Actuated Tools       | 18 - 22 |
| Powder Actuated Consumables | 23 - 27 |



Multi-function Barrel System



Keyless Jam Clearing



Magazine system for wide variety of nails



Removable Magazine System

**Keyless Jam Clearing** - Unplug magazine and unscrew barrel without getting extra tool to resume your work.

**Multi-function Barrel System (PATENTED)** - Easiest barrel systems for different applications, magnetic or plastic, or whatever you see interesting.

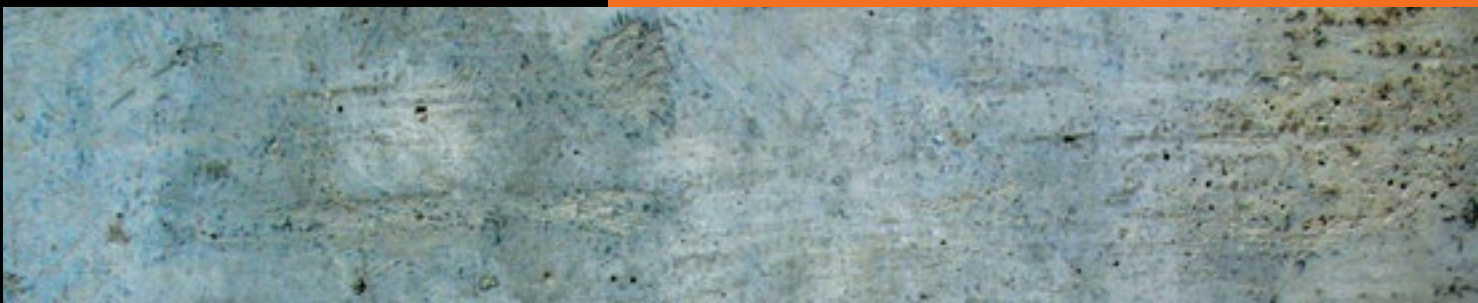
**Removable Magazine System** - Easy to increase capacity to 40pins magazine for rapid shooters; or single shot user with pre-assembled clips/washers by taking of the magazine in a second.

**Magazine System for wide variety of nails** - C38HD and C65 can shoot 2.6mm shank nails without using different collation strips; SP series can shoot collation PAT nails.

**Additional Features** - new & modern design, optimized ergonomics, easy handling, very low backstroke, high efficiency system, light weight .

**3 different power classes**

**Short track and Long track options available**



## Concrete Gas Tools





**Keyless Jam Clearing** - Unplug magazine and unscrew barrel without getting extra tool to resume your work.

**Multi-function Barrel System (PATENTED)** - Easiest barrel systems for different applications, magnetic or plastic, or whatever you see interesting.

**Removable Magazine System** - Easy to increase capacity to 40pins magazine for rapid shooters; or single shot user with pre-assembled clips/washers by taking of the magazine in a second.

**Magazine System for wide variety of nails** - C38HD and C65 can shoot 2.6mm shank nails without using different collation strips; SP series can shoot collation PAT nails.

**Available in the following models:**  
C38-ST, C38-LT, C38HD-ST, C38HD-LT, C38SP



|                             | C38-ST/LT   | C38HD   | C38SP  |
|-----------------------------|---|---|--|
| Dimensions (LxWxH)          | 400X360X100   | 420X360X120   | 475X395X120  |
| Weight                      | 3.9kg   | 4.4kg   | 4.75kg   |
| Automatic piston return     | Yes   | Yes   | Yes  |
| Max. fastener driving rate  | 1200 / h  | 1000 / h  | 800 / h  |
| Fastener specifications     | 6.3mm Head Diameter<br>2.6mm x 13-38mm Regular Nails<br>3.0mm x 13-38mm Premium Nails | 6.3mm Head Diameter<br>2.6mm x 13-38mm Regular Nails<br>3.0mm x 13-38mm Premium Nails<br>3.7mm x 20-40mm Step Nails | 8mm Head Diameter<br>3.7mm x 16-38mm PAT Nails                             |
| Power source type           | FC154B/FC165B   | FC154G/FC165G   | FC154G/FC165G  |
| Width                       | 154 mm (with adapter) / 165 mm  | 154 mm (with adapter) / 165 mm  | 154 mm (with adapter) / 165 mm   |
| Sound power level           | 104 ± 2dB (A)   | 107 ± 2dB (A)   | 105 ± 2dB (A)  |
| Base materials              | Concrete<br>Steel<br>Block<br>Masonry<br>Brick (sand-lime)<br>Wood                    | Concrete<br>Steel<br>Block<br>Masonry<br>Brick (sand-lime)<br>Wood  | Concrete<br>Steel<br>Block<br>Masonry<br>Brick (sand-lime)<br>Wood         |
| Applications                | Tracking<br>Electrician<br>Wiring   | Tracking<br>Electrician<br>Plumbing<br>Wiring   | Tracking<br>Plumbing<br>Deflection Head<br>Wood Forming<br>Soft Insulation |
| Magazine capacity           | 30 (Short Track) / 40 (Long Track)  | 30 (Short Track) / 40 (Long Track)  | 20   |
| Power                       | 90 J  | 112 J   | 155 J  |
| Depth Adjustment            | Yes   | Yes   | Yes  |
| Operating Temperature Range | -10 - 45 C  | -10 - 45 C  | -10 - 45 C   |
| Approval                    | CE  | CE (Pending)  | CE (Pending)   |



**Keyless Jam Clearing** - Unplug magazine and unscrew barrel without getting extra tool to resume your work.

**Multi-function Barrel System (PATENTED)** - Easiest barrel systems for different applications, magnetic or plastic, or whatever you see interesting.

**Removable Magazine System** - Easy to increase capacity to 40pins magazine for rapid shooters; or single shot user with pre-assembled clips/washers by taking of the magazine in a second.

**Magazine System for wide variety of nails** - C38HD and C65 can shoot 2.6mm shank nails without using different collation strips; SP series can shoot collation PAT nails.

**Available in the following models:**  
C65, C65SP



|                             | C65   | C65SP   |
|-----------------------------|---|---|
| Dimensions (LxWxH)          | 480X350X120   | 480X395X120   |
| Weight                      | 4.9kg   | 4.9kg   |
| Automatic piston return     | Yes   | Yes   |
| Max. fastener driving rate  | 800 / h   | 800/ h  |
| Fastener specifications     | 6.3mm Head Diameter<br>2.6mm x 25-65mm Regular Nails<br>3.0mm x 13-38mm Premium Nails<br>3.7mm x 20-65mm Step Nails | 8mm Head Diameter<br>3.7mm x 16-62mm PAT Nails  |
| Power source type           | FC154G/FC165G   | FC154G/FC165G   |
| Width                       | 154 mm (with adapter) / 165 mm  | 154 mm (with adapter) / 165 mm  |
| Sound power level           | 104 ± 2dB (A)   | 105 ± 2dB (A)   |
| Base materials              | Concrete<br>Steel<br>Block<br>Masonry<br>Brick (sand-lime)<br>Wood  | Concrete<br>Steel<br>Block<br>Masonry<br>Brick (sand-lime)<br>Wood                          |
| Applications                | Tracking<br>Plumbing<br>Deflection Head<br>Wood Forming<br>Soft Insulation  | Tracking<br>Plumbing<br>Deflection Head<br>Wood Forming<br>Soft Insulation<br>Formwork Stop |
| Magazine capacity           | 30  | 20  |
| Power                       | 155J  | 155J  |
| Depth Adjustment            | Yes   | Yes   |
| Operating Temperature Range | -10 - 45 C  | -10 - 45 C  |
| Approval                    | CE  | CE (Pending)  |



Multi-function Barrel System



Removable barrel for easy transport



Different Power level across model range

**Multi-functional Barrel** - Not just for insulation, you can shoot standard pins/washer pins with different barrels. (IS140SP and IS200SP only).

**Easy Transportation** - Removable barrel makes our tool more compact.

**Different power level** - That suggest you to pick your favorite model according to your applications, insulation materials and base materials.

**Additional Features** - new & modern design, optimized ergonomics, easy handling, very low backstroke, high efficiency system, light weight.

**New Technology** - Up to 10 times faster than traditional fastening systems

**3 different power classes**



## Insulation Gas Tools





**Multi-functional Barrel** - Not just for insulation, you can shoot standard pins/washer pins with different barrels. (IS140SP and IS200SP only).

**Easy Transportation** - Removable barrel makes our tool more compact.

**Different power level** - That suggest you to pick your favorite model according to your applications, insulation materials and base materials.

**Available in the following models:**  
IS140LD, IS140HD, IS140SP.



|                             | IS140LD  | IS140HD  | IS140SP  |
|-----------------------------|--|--|--|
| Dimensions (LxWxH)          | 470X350X100  | 500X360X120  | 530X360X120  |
| Weight                      | 3.3kg  | 3.8kg  | 4.2kg  |
| Automatic piston return     | Yes  | Yes  | Yes  |
| Max. fastener driving rate  | 800 / h  | 600 / h  | 600 / h  |
| Fastener specifications     | 6.3mm Head Diameter<br>3.2/2.8mm Nail Shank Diameter<br>up to 140mm Insulation Thickness | 6.3mm Head Diameter<br>3.2/2.8mm Nail Shank Diameter<br>up to 140mm Insulation Thickness | 6.3mm Head Diameter<br>3.6/3.2mm Nail Shank Diameter<br>up to 140mm Insulation Thickness |
| Power source type           | FC154B/FC165B  | FC154G/FC165G  | FC154G/FC165G  |
| Width                       | 154 mm (with adapter) / 165 mm   | 154 mm (with adapter) / 165 mm   | 154 mm (with adapter) / 165 mm   |
| Sound power level           | N/A  | N/A  | N/A  |
| Base materials              | Concrete<br>Steel<br>Block<br>Masonry<br>Brick (sand-lime)<br>Wood                       | Concrete<br>Steel<br>Block<br>Masonry<br>Brick (sand-lime)<br>Wood                       | Concrete<br>Steel<br>Block<br>Masonry<br>Brick (sand-lime)<br>Wood                       |
| Applications                | Insulation Fixing  | Insulation Fixing  | Insulation Fixing<br>Wood to Concrete<br>Washer Pins                                     |
| Magazine capacity           | N/A  | N/A  | N/A  |
| Power                       | 90 J   | 112 J  | 155 J  |
| Depth Adjustment            | Yes  | No   | No   |
| Operating Temperature Range | -10 - 45 C   | -10 - 45 C   | -10 - 45 C   |
| Approval                    | CE (Pending)   | CE (Pending)   | CE   |



**Multi-functional Barrel** - Not just for insulation, you can shoot standard pins/washer pins with different barrels. (IS140SP and IS200SP only).

**Easy Transportation** - Removable barrel makes our tool more compact.

**Different power level** - That suggest you to pick your favorite model according to your applications, insulation materials and base materials.

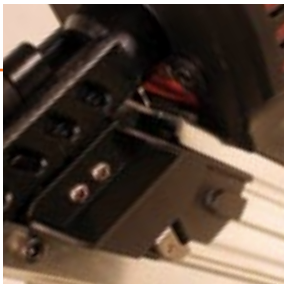
**Available in the following models:**  
IS200, IS200HD, IS200SP.



|                             | IS200  | IS200HD  | IS200SP  |
|-----------------------------|--|--|--|
| Dimensions (LxWxH)          | 530X350X100  | 560X360X120  | 590X360X120  |
| Weight                      | 3.3kg  | 3.8kg  | 4.2kg  |
| Automatic piston return     | Yes  | Yes  | Yes  |
| Max. fastener driving rate  | 800 / h  | 600 / h  | 600 / h  |
| Fastener specifications     | 6.3mm Head Diameter<br>3.2/2.8mm Nail Shank Diameter<br>up to 200mm Insulation Thickness | 6.3mm Head Diameter<br>3.2/2.8mm Nail Shank Diameter<br>up to 200mm Insulation Thickness | 6.3mm Head Diameter<br>3.6/3.2mm Nail Shank Diameter<br>up to 200mm Insulation Thickness |
| Power source type           | FC154B/FC165B  | FC154G/FC165G  | FC154G/FC165G  |
| Width                       | 154 mm (with adapter) / 165 mm   | 154 mm (with adapter) / 165 mm   | 154 mm (with adapter) / 165 mm   |
| Sound power level           | N/A  | N/A  | N/A  |
| Base materials              | Concrete<br>Steel<br>Block<br>Masonry<br>Brick (sand-lime)<br>Wood                       | Concrete<br>Steel<br>Block<br>Masonry<br>Brick (sand-lime)<br>Wood                       | Concrete<br>Steel<br>Block<br>Masonry<br>Brick (sand-lime)<br>Wood                       |
| Applications                | Insulation Fixing  | Insulation Fixing  | Insulation Fixing<br>Wood to Concrete<br>Washer Pins                                     |
| Magazine capacity           | N/A  | N/A  | N/A  |
| Power                       | 90 J   | 112 J  | 155 J  |
| Depth Adjustment            | No   | No   | No   |
| Operating Temperature Range | -10 - 45 C   | -10 - 45 C   | -10 - 45 C   |
| Approval                    | CE (Pending)   | CE (Pending)   | CE   |



Keyless depth adjustment (patented)



Keyless jam clearing



Heavy duty nose piece

**Keyless Depth Adjustment (PATENTED)** - Long range of depth adjustment, and keyless. (For Wood Framing only)

**Keyless Jam Clearing** - Unscrew barrel without getting extra tool to resume your work.

**Heavy Duty Nose Piece** - We take durability seriously to further save your maintenance costs.

**Additional Features** - new & modern design, optimized ergonomics, easy handling, very low backstroke, high efficiency system, light weight.



Wood Gas Tools





**Keyless Depth Adjustment (PATENTED)**  
- Long range of depth adjustment, and keyless.  
(For Wood Framing only)

**Keyless Jam Clearing** - Unscrew barrel without getting extra tool to resume your work.

**Heavy Duty Nose Piece** - We take durability seriously. Further save your maintenance cost.

**Available in the following models:**  
W90/34F, W90/21F



|                             | W90/34F  | W90/21F  |
|-----------------------------|--|--|
| Dimensions (LxWxH)          | 400X360X100  | 400x375x100  |
| Weight                      | 3.95kg   | 3.95kg   |
| Automatic piston return     | Yes  | Yes  |
| Max. fastener driving rate  | 1200 / h   | 1200 / h   |
| Fastener specifications     | 3.1mm D-Head Diameter<br>2.9-3.1mm Shank Diameter<br>50-90mm Nail Length | 3.1mm D-Head Diameter<br>2.9-3.1mm Shank Diameter<br>50-90mm Nail Length |
| Power source type           | FC154B/FC165B  | FC154B/FC165B  |
| Width                       | 154 mm (with adapter) / 165 mm   | 154 mm (with adapter) / 165 mm   |
| Sound power level           | 104 ± 2dB (A)  | 103 ± 2dB (A)  |
| Base materials              | Wood   | Wood   |
| Applications                | Wood Framing   | Wood Framing   |
| Magazine capacity           | 60   | 46   |
| Power                       | 90 J   | 90 J   |
| Depth Adjustment            | Yes  | Yes  |
| Operating Temperature Range | -10 - 45 °C  | -10 - 45 °C  |
| Approval                    | CE   | CE (Pending)   |



**Keyless Depth Adjustment (PATENTED)**  
- Long range of depth adjustment, and keyless.  
(For Wood Framing only)

**Keyless Jam Clearing** - Unscrew barrel without getting extra tool to resume your work.

**Heavy Duty Nose Piece** - We take durability seriously. Further save your maintenance cost.

**Available in the following models:**  
W60/21P, W60/21PHD

|                             | W60/21P   | W60/21PHD  |
|-----------------------------|---|--|
| Dimensions (LxWxH)          | 400X375X100   | 440X360X120  |
| Weight                      | 3.95kg  | 4.45kg   |
| Automatic piston return     | Yes   | Yes  |
| Max. fastener driving rate  | 1200 / h  | 1200 / h   |
| Fastener specifications     | 4.0mm Round Head Diameter<br>4.0-4.3mm Shank Diameter<br>40-50mm Nail Length/ 60mm on normal wood | 4.0mm Round Head Diameter<br>4.0-4.3mm Shank Diameter<br>40-60mm Nail Length |
| Power source type           | FC154B/FC165B   | FC154G/FC165G  |
| Width                       | 154 mm (with adapter) / 165 mm  | 154 mm (with adapter) / 165 mm   |
| Sound power level           | 103 ± 2dB (A)   |  |
| Base materials              | Wood  | Wood   |
| Applications                | Metal Connector Fixing  | Metal Connector Fixing   |
| Magazine capacity           | 46  | 46   |
| Power                       | 90 J  | 112J   |
| Depth Adjustment            | No  | No   |
| Operating Temperature Range | -10 - 45 °C   | -10 - 45 °C  |
| Approval                    | CE  | CE (Pending)   |



Product: Insulation Fasteners  
Specification: Shank Dia - 3.6/3.2mm, Step Shank, Flat Head, Ballistic Point, Dia. 60mm Insulation Disc  
Plating: Mechanical Galvanized  
Packaging: Carton Box Pack + Pallet



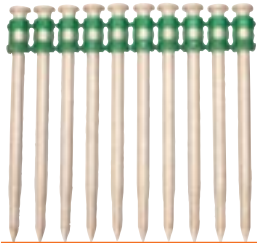
Product: Insulation Fasteners  
Specification: Shank Dia - 3.6/3.2mm, Step Shank, Flat Head, Ballistic Point, Dia. 90mm Insulation Disc  
Plating: Mechanical Galvanized  
Packaging: Carton Box Pack + Pallet



Product: Insulation Fasteners  
Specification: Shank Dia - 3.2/2.8mm, Step Shank, Flat Head, Ballistic Point, Dia. 60mm Insulation Disc  
Plating: Mechanical Galvanized  
Packaging: Carton Box Pack + Pallet



Product: C38HD/C65 Collated Pins  
Specification: with C38HD/C65 Strip  
Plating: Mechanical Galvanized  
Packaging: Color Box Pack



Product: C38HD/C65 Collated Extra Hard Pins  
Specification: with C38HD/C65 Strip  
Plating: Yellow Zinc Plated  
Packaging: Color Box Pack



|           | Insulation Thickness | Bag Qty | Box Qty | Pallet Qty |
|-----------|----------------------|---------|---------|------------|
| IS60025SP | 25mm                 | 50      | 1000    | 18000      |
| IS60030SP | 30mm                 | 50      | 1000    | 18000      |
| IS60035SP | 35mm                 | 50      | 1000    | 18000      |
| IS60040SP | 40mm                 | 50      | 1000    | 18000      |
| IS60045SP | 45mm                 | 50      | 900     | 16200      |
| IS60050SP | 50mm                 | 50      | 900     | 16200      |
| IS60060SP | 60mm                 | 50      | 850     | 15300      |
| IS60070SP | 70mm                 | 50      | 750     | 13500      |
| IS60075SP | 75mm                 | 50      | 650     | 11700      |
| IS60080SP | 80mm                 | 50      | 650     | 11700      |
| IS60090SP | 90mm                 | 50      | 500     | 9000       |
| IS60100SP | 100mm                | 50      | 500     | 9000       |
| IS60120SP | 120mm                | 25      | 450     | 8100       |
| IS60140SP | 140mm                | 25      | 350     | 6300       |
| IS60150SP | 150mm                | 25      | 300     | 5400       |
| IS60180SP | 180mm                | 25      | 250     | 4500       |

Pictured: IS90100SP - Insulation Fasteners (Soft base material) for SP Tools

|           | Insulation Thickness | Bag Qty | Box Qty | Pallet Qty |
|-----------|----------------------|---------|---------|------------|
| IS90040SP | 40mm                 | 50      | 1000    | 18000      |
| IS90050SP | 50mm                 | 50      | 900     | 16200      |
| IS90060SP | 60mm                 | 50      | 850     | 15300      |
| IS90080SP | 80mm                 | 50      | 650     | 11700      |
| IS90090SP | 90mm                 | 50      | 500     | 9000       |
| IS90100SP | 100mm                | 50      | 500     | 9000       |
| IS90120SP | 120mm                | 25      | 450     | 8100       |

Pictured: IS60100LD - Insulation Fasteners (Soft base material) for LD/HD Tools

|           | Insulation Thickness | Bag Qty | Box Qty | Pallet Qty |
|-----------|----------------------|---------|---------|------------|
| IS60025LD | 25mm                 | 50      | 1000    | 18000      |
| IS60030LD | 30mm                 | 50      | 1000    | 18000      |
| IS60035LD | 35mm                 | 50      | 1000    | 18000      |
| IS60040LD | 40mm                 | 50      | 1000    | 18000      |
| IS60045LD | 45mm                 | 50      | 900     | 16200      |
| IS60050LD | 50mm                 | 50      | 900     | 16200      |
| IS60060LD | 60mm                 | 50      | 850     | 15300      |
| IS60070LD | 70mm                 | 50      | 750     | 13500      |
| IS60075LD | 75mm                 | 50      | 650     | 11700      |
| IS60080LD | 80mm                 | 50      | 650     | 11700      |
| IS60090LD | 90mm                 | 50      | 500     | 9000       |
| IS60100LD | 100mm                | 50      | 500     | 9000       |
| IS60120LD | 120mm                | 25      | 450     | 8100       |
| IS60140LD | 140mm                | 25      | 350     | 6300       |
| IS60150LD | 150mm                | 25      | 300     | 5400       |
| IS60180LD | 180mm                | 25      | 250     | 4500       |
| IS60200LD | 200mm                | 25      | 250     | 4500       |

|            | Size             | Box Qty | Carton Qty | Pallet Qty |
|------------|------------------|---------|------------|------------|
| SG26190700 | .102 x 19mm      | 700     | 3500       | 147000     |
| SG26250700 | .102 x 25mm      | 700     | 3500       | 147000     |
| SG26400700 | .102 x 40mm      | 700     | 3500       | 147000     |
| SG26500700 | .102 x 50mm      | 700     | 3500       | 147000     |
| SG26600700 | .102 x 60mm      | 700     | 3500       | 147000     |
| SG26650700 | .102 x 65mm      | 700     | 3500       | 147000     |
| SG37200700 | .145/.120 x 20mm | 700     | 3500       | 147000     |
| SG37400700 | .145/.120 x 40mm | 700     | 3500       | 147000     |
| SG37500700 | .145/.120 x 50mm | 700     | 3500       | 147000     |
| SG37600700 | .145/.120 x 60mm | 700     | 3500       | 147000     |
| SG37650700 | .145/.120 x 65mm | 700     | 3500       | 147000     |

|            | Size                | Box Qty | Carton Qty | Pallet Qty |
|------------|---------------------|---------|------------|------------|
| SG30170700 | .120/.102 x 17mm XH | 700     | 3500       | 147000     |
| SG30220700 | .120/.102 x 22mm XH | 700     | 3500       | 147000     |
| SG30270700 | .120/.102 x 27mm XH | 700     | 3500       | 147000     |
| SG30380700 | .120/.102 x 38mm XH | 700     | 3500       | 147000     |

|            | Size                | Box Qty | Carton Qty | Pallet Qty |
|------------|---------------------|---------|------------|------------|
| SG30171000 | .120/.102 x 17mm XH | 1000    | 5000       | 210000     |
| SG30221000 | .120/.102 x 22mm XH | 1000    | 5000       | 210000     |
| SG30271000 | .120/.102 x 27mm XH | 1000    | 5000       | 210000     |
| SG30381000 | .120/.102 x 38mm XH | 1000    | 5000       | 210000     |

|            | Size                  | Box Qty | Carton Qty | Pallet Qty |
|------------|-----------------------|---------|------------|------------|
| SG26131000 | .120/.102 x 13mm 1/2" | 1000    | 5000       | 210000     |
| SG26191000 | .102 x 19mm 3/4"      | 1000    | 5000       | 210000     |

|            | Size               | Box Qty | Carton Qty | Pallet Qty |
|------------|--------------------|---------|------------|------------|
| SG26221000 | .102 x 22mm 7/8"   | 1000    | 5000       | 210000     |
| SG26251000 | .102 x 25mm 1"     | 1000    | 5000       | 210000     |
| SG26321000 | .102 x 32mm 1-1/4" | 1000    | 5000       | 210000     |
| SG26381000 | .102 x 38mm 1-1/2" | 1000    | 5000       | 210000     |

|         | Size                     | Box Qty | Carton Qty |
|---------|--------------------------|---------|------------|
| SGMW14  | Metal Washer 14mm        | 100     | 1000       |
| SGMW25  | Metal Washer 25mm        | 100     | 1000       |
| SGDMW16 | Domed Metal Washer 16mm  | 100     | 1000       |
| SGDMW23 | Domed Metal Washer 23mm  | 100     | 1000       |
| SGXCC   | XCC Ceiling Clips        | 100     | 1000       |
| SGCC    | 90 Degree Angle Clip     | 100     | 1000       |
| SGSMW25 | Square Metal Washer 25mm | 100     | 1000       |

Product: C38 Collated XH Pins  
Specification: with C38 Strip  
Plating: Yellow Zinc Plated  
Packaging: Color Box Pack  
Remark: -

Product: C38 Collated Pins  
Specification: with C38 Strip  
Plating: Yellow Zinc Plated  
Packaging: Color Box Pack

Product: C38 Collated Pins  
Specification: with C38 Strip  
Plating: Mechanical Galvanized  
Packaging: Color Box Pack  
Remark: -

Product: Gas Accessories  
Specification: -  
Plating: White Zinc Plated  
Packaging: Color Box Pack  
Remark: Magnetic Adapter is needed



SGMW14 SGMW25 SGDMW16



SGDMW23 SGXCC

Fuel Cell Details:

165mm high,  
12 bar acc. UN1950,  
18 bars acc. UN3150

Operating Temperatures: -10°C to 45°C

FC154B - C38-ST/LD, IS140LD, IS200, W90/34F, W90/21F, W60 / 21P

FC165B - C38-ST/LD, IS140LD, IS200, W90/34F, W90/21F, W60 / 21P

FC154G - C38HD, C38SP, C65, C65SP, IS140HD, IS140SP, IS200HD, IS200SP, W60/21PHD

FC165G - C38HD, C38SP, C65, C65SP, IS140HD, IS140SP, IS200HD, IS200SP, W60/21PHD

90J Tools use Blue Valve  
112J and 155J use Green Valve

Red Valve (other brands) compatible with our 90J Tools

Product: Fuel Cells





Reload identification marker



Magazine or single shot load



Full power adjustment



Automatic piston return using high quality rubber system

### SG350

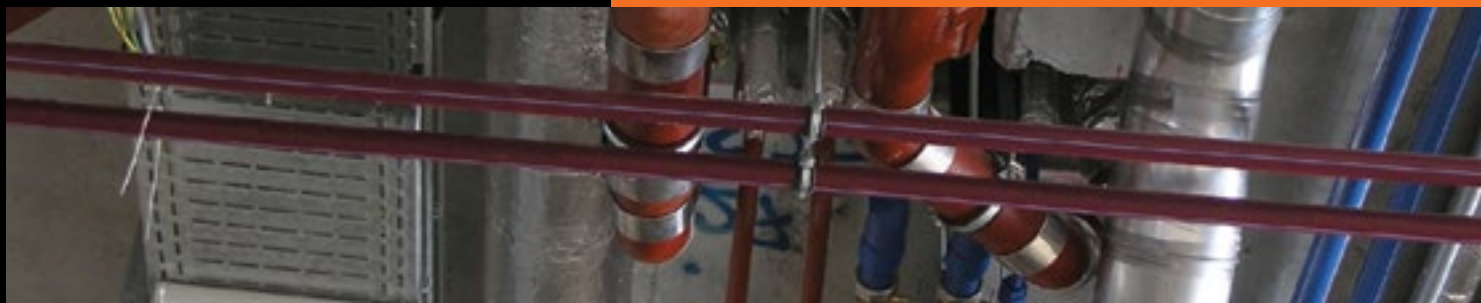
- Lightweight tool
- Specially designed for drywall and acoustical applications
- Easy to use, easy to maintain
- Semi-automatic cartridge advance
- 6 Level power regulation
- CE/PTB Approved

### SG450

- Silencer for noise reduction
- Semi-automatic cartridge advance
- Full power regulation

### SG60M8/SG60M9

- Automatic piston return using high quality rubber system
- Magazine or single shot tool
- Disc system to eliminate warping at high temperatures
- Full power adjustment
- Reload identification marker
- Easy maintenance, allowing on site maintenance & reduced down time
- CE/PTB Approved



## Powder Actuated Tools



This is a semi automatic low velocity fastening tool ideal for medium to high volume applications. This tool drives pins, clips and clip assemblies into concrete and steel without requiring cords or air lines. Its mobility, compact size and low weight contribute meaningfully to productivity while its long slim nose makes it useful for driving fasteners into some of the most awkward places such as strut channels or junction boxes.

- Lightweight tool
- Specially designed for drywall and acoustical applications
- Easy to use, easy to maintain
- Semi-automatic cartridge advance
- 6 Level power regulation
- CE/PTB Approved



|                            | SG350  |
|----------------------------|--|
| Dimensions (LxWxH)         | 340mm  |
| Weight                     | 2.35kg   |
| Automatic piston return    | No   |
| Max. fastener driving rate | 500 / h  |
| Fastener specifications    | 8mm Head Diameter<br>3.7mm x 13-62mm Nails<br>(prenailing is necessary with longer elements)   |
| Power source type          | Strip Cartridges - PTB system approval<br>.27 Cal. (6.8/11), Green (Weak Load)<br>.27 Cal. (6.8/11), Yellow (Medium Load)<br>.27 Cal. (6.8/11), Red (Very Strong Load) |
| Sound power level          | 112 ± 2dB (A)  |
| Base materials             | Concrete<br>Steel<br>Block   |
| Applications               | Ideal for fastenings of ceiling clip assemblies<br>Metal track<br>Door frames<br>Concrete forms<br>Basket clips<br>Forming pins  |
| Magazine capacity          | N/A  |
| Power                      | N/A  |
| Power Control              | Yes / 6 steps  |
| Approval                   | PTB/CE   |



Ideal for universal fastening to concrete, brick and steel using a wide range of drive pins. Its versatility allows the user to fasten virtually everything. It's inbuilt power regulation system means that most fastening jobs can be accomplished with one power load level. Silenced operation and low recoil increase operator comfort leading to higher productivity.

- Silencer for noise reduction
- Semi-automatic cartridge advance
- Full power regulation
- Very low backstroke

|                            | SG450  |
|----------------------------|--|
| Dimensions (LxWxH)         | 350mm  |
| Weight                     | 3.10kg   |
| Automatic piston return    | No   |
| Max. fastener driving rate | 500 / h  |
| Fastener specifications    | 6mm Head Diameter<br>3.7mm x 13-72mm Nails<br>(prenailing is necessary with longer elements)   |
| Power source type          | Strip Cartridges - PTB system approval<br>.27 Cal. (6.8/11), Green (Weak Load)<br>.27 Cal. (6.8/11), Yellow (Medium Load)<br>.27 Cal. (6.8/11), Red (Very Strong Load)<br>.27 Cal. (6.8/11), Black (Strongest) |
| Sound power level          |  |
| Base materials             | Concrete<br>Steel<br>Block   |
| Applications               | Ideal for fastenings of timber to concrete<br>Brick ties to steel<br>Timber to steel<br>Steel to steel   |
| Magazine capacity          | N/A  |
| Power                      | N/A  |
| Power Control              | Yes / Full Variable with Dial  |
| Approval                   | -  |





The SG60M8/M9 is a professional powder actuated tool which offers user comfort along with quick maintenance for easy repair. Its ergonomic features and anti vibration functions allows this tool to operate for long periods of time.

**Automatic piston return using high quality rubber system**

**Magazine or single shot tool**

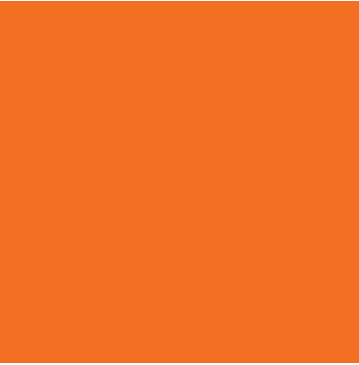
**Disc system to eliminate warping at high temperatures**

**Full power adjustment**

**Reload identification marker**

**Easy maintenance, allowing on site maintenance & reduced down time**

**CE/PTB Approved**



|                            | SG60M8   | SG60M9   |
|----------------------------|--|--|
| Dimensions (LxWxH)         | 460 x 240 x 75mm (Magazine) / 440 x 215 x 75mm (Single Shot)   | 460 x 240 x 75mm (Magazine) / 440 x 215 x 75mm (Single Shot)   |
| Weight                     | 3.2kg (Magazine) / 2.8kg (Single Shot)   | 3.2kg (Magazine) / 2.8kg (Single Shot)   |
| Automatic piston return    | Rubber return  | Rubber return  |
| Max. fastener driving rate | 500 / h  | 500 / h  |
| Fastener specifications    | 8mm Head Diameter<br>3.7mm x 16-62mm Collated Nails<br>3.7mm x 16-72mm Single Shot Nails<br>(prenailing is necessary with longer elements)       | 9mm Head Diameter<br>3.7mm x 15-60mm Collated Nails<br>3.7mm x 15-70mm Single Shot Nails<br>(prenailing is necessary with longer elements)       |
| Power source type          | Plate Cartridges<br>.25 Cal. (6.3/10), Green (Weak Load)<br>.25 Cal. (6.3/10), Yellow (Medium Load)<br>.25 Cal. (6.3/10), Red (Very Strong Load) | Plate Cartridges<br>.25 Cal. (6.3/10), Green (Weak Load)<br>.25 Cal. (6.3/10), Yellow (Medium Load)<br>.25 Cal. (6.3/10), Red (Very Strong Load) |
| Sound power level          | 104 ± 2dB (A)  | 104 ± 2dB (A)  |
| Base materials             | Concrete<br>Steel<br>Block   | Concrete<br>Steel<br>Block   |
| Applications               | Metal sheeting<br>Brick ties<br>Dry lining track<br>Kick plate fixing<br>Steel to steel  | Metal sheeting<br>Brick ties<br>Dry lining track<br>Kick plate fixing<br>Steel to steel  |
| Magazine capacity          | 10   | 10   |
| Power                      | -  | -  |
| Power Control              | Yes / Full Variable with Dial  | Yes / Full Variable with Dial  |
| Approval                   | PTB / CE   | PTB / CE   |

|         | Shank Diameter | Nail Length | Washer Diam. | Inner/Outer Box Qty. |
|---------|----------------|-------------|--------------|----------------------|
| SGDN13K | 3.7            | 13          | 8/9          | 100/3000             |
| SGDN16K | 3.7            | 16          | 8/9          | 100/3000             |
| SGDN19K | 3.7            | 19          | 8/9          | 100/3000             |
| SGDN22  | 3.7            | 22          | 8/9          | 100/3000             |
| SGDN27  | 3.7            | 27          | 8/9          | 100/3000             |
| SGDN32  | 3.7            | 32          | 8/9          | 100/3000             |
| SGDN37  | 3.7            | 37          | 8/9          | 100/3000             |
| SGDN42  | 3.7            | 42          | 8/9          | 100/3000             |
| SGDN47  | 3.7            | 47          | 8/9          | 100/3000             |
| SGDN52  | 3.7            | 52          | 8/9          | 100/3000             |
| SGDN57  | 3.7            | 57          | 8/9          | 100/2000             |
| SGDN62  | 3.7            | 62          | 8/9          | 100/2000             |
| SGDN67  | 3.7            | 67          | 8/9          | 100/2000             |
| SGDN72  | 3.7            | 72          | 8/9          | 100/2000             |
| SGDN82  | 3.7            | 82          | 8/9          | 100/2000             |
| SGDN97  | 3.7            | 97          | 8/9          | 100/2000             |

SGDN - Plastic Washered Nails



|         | Shank Diameter | Nail Length | Washer Diam. | Inner/Outer Box Qty. |
|---------|----------------|-------------|--------------|----------------------|
| SGNK13K | 3.7            | 13          | 13           | 100/3000             |
| SGNK16K | 3.7            | 16          | 16           | 100/3000             |
| SGNK19K | 3.7            | 19          | 19           | 100/3000             |
| SGNK22  | 3.7            | 22          | 22           | 100/3000             |
| SGNK27  | 3.7            | 27          | 27           | 100/3000             |
| SGNK32  | 3.7            | 32          | 32           | 100/3000             |
| SGNK37  | 3.7            | 37          | 37           | 100/3000             |
| SGNK42  | 3.7            | 42          | 42           | 100/3000             |
| SGNK47  | 3.7            | 47          | 47           | 100/3000             |
| SGNK52  | 3.7            | 52          | 52           | 100/3000             |
| SGNK57  | 3.7            | 57          | 57           | 100/2000             |
| SGNK62  | 3.7            | 62          | 62           | 100/2000             |
| SGNK67  | 3.7            | 67          | 67           | 100/2000             |
| SGNK72  | 3.7            | 72          | 72           | 100/2000             |
| SGNK82  | 3.7            | 82          | 82           | 100/2000             |
| SGNK97  | 3.7            | 97          | 97           | 100/2000             |

SGNK - Metal Washered Nails



|               | Thread Diameter | Thread Length | Shank Length | Inner/Outer Box Qty. |
|---------------|-----------------|---------------|--------------|----------------------|
| SGTS6-08-12DN | 6               | 8             | 12           | 100                  |
| SGTS6-08-17DN | 6               | 8             | 17           | 100                  |
| SGTS6-08-22DN | 6               | 8             | 22           | 100                  |
| SGTS6-08-27DN | 6               | 8             | 27           | 100                  |

SGNK - Metal Washered Nails



|              | Shank Diameter | Nail Length | Washer Diam. | Inner/Outer Box Qty. |
|--------------|----------------|-------------|--------------|----------------------|
| SGTS-NK27W25 | 3.7            | 27          | 25           | 100                  |
| SGTS-NK32W25 | 3.7            | 32          | 25           | 100                  |
| SGTS-NK37W25 | 3.7            | 37          | 25           | 100                  |
| SGTS-NK42W25 | 3.7            | 42          | 25           | 100                  |
| SGTS-NK47W25 | 3.7            | 47          | 25           | 100                  |
| SGTS-NK52W25 | 3.7            | 52          | 25           | 100                  |
| SGTS-NK57W25 | 3.7            | 57          | 25           | 100                  |
| SGTS-NK62W25 | 3.7            | 62          | 25           | 100                  |
| SGTS-NK67W25 | 3.7            | 67          | 25           | 100                  |
| SGTS-NK72W25 | 3.7            | 72          | 25           | 100                  |

SGTS-NK - Metal Washered Threaded Studs



|         | Shank Diameter | Shank Length    | Head Diam. | Inner/Outer Box Qty. |
|---------|----------------|-----------------|------------|----------------------|
| SDPN12K | 3.6            | 12.70 (knurled) | 3.72       | 100/5000             |
| SDPN16K | 3.6            | 15.88 (knurled) | 3.72       | 100/5000             |
| SDPN19  | 3.6            | 19.05           | 3.72       | 100/5000             |
| SDPN19B | 3.6            | 19.05 (black)   | 3.72       | 100/5000             |
| SDPN25  | 3.6            | 25.04           | 3.72       | 100/5000             |
| SDPN28  | 3.6            | 28.58           | 3.72       | 100/5000             |
| SDPN31  | 3.6            | 31.75           | 3.72       | 100/5000             |
| SDPN38  | 3.6            | 38.1            | 3.72       | 100/5000             |
| SDPN44  | 3.6            | 44.45           | 3.72       | 100/5000             |
| SDPN51  | 3.6            | 50.8            | 3.72       | 100/5000             |
| SDPN57  | 3.6            | 57.15           | 3.72       | 100/5000             |
| SDPN60  | 3.6            | 60.33           | 3.72       | 100/5000             |
| SDPN63  | 3.6            | 63.5            | 3.72       | 100/5000             |
| SDPN70  | 3.6            | 69.85           | 3.72       | 100/5000             |
| SDPN76  | 3.6            | 76.2            | 3.72       | 100/5000             |

- Plastic Flute Nails



SGX-CC - Ceiling Clip



|       | Shank Diameter | Nail Length | Washer Diam. | Inner/Outer Box Qty. |
|-------|----------------|-------------|--------------|----------------------|
| X27CC | 3.7            | 27          | 8/9          | 100                  |
| X32CC | 3.7            | 32          | 8/9          | 100                  |

| SGSL47M | Shank Diameter | Nail Length | Head Diam. | Inner/Outer Box Qty. |
|---------|----------------|-------------|------------|----------------------|
| SGSL54M | 3.7            | 54          | 8/9        | 100                  |
| SGSL62M | 3.7            | 62          | 8/9        | 100                  |

SGSL-M - Magazine Strip Nails



SG-EP - Eyelet Pin



| EP22TB | Shank Diameter | Nail Length | Washer Diam. | Inner/Outer Box Qty. |
|--------|----------------|-------------|--------------|----------------------|
| EP27TB | 3.7            | 5 x 10      | 22           | 100                  |
| EP32TB | 3.7            | 5 x 10      | 27           | 100                  |
|        | 3.7            | 5 x 10      | 32           | 100                  |

| SG-SL47 | Shank Diameter | Nail Length | Head Diam. | Inner/Outer Box Qty. |
|---------|----------------|-------------|------------|----------------------|
| SG-SL54 | 3.7            | 47          | 8/9        | 100                  |
| SG-SL62 | 3.7            | 54          | 8/9        | 100                  |
|         | 3.7            | 62          | 8/9        | 100                  |

SG-SL - Framing Nails



SGX-FB1 - Conduit Clip



| X13FB1 | Shank Diameter | Nail Length | Washer Diam. | Inner/Outer Box Qty. |
|--------|----------------|-------------|--------------|----------------------|
| X19FB1 | 3.7            | 13          | 8/9          | 100                  |
| X26FB1 | 3.7            | 19          | 8/9          | 100                  |
|        | 3.7            | 26          | 8/9          | 100                  |

| SGDP938015K | Shank Diameter | Nail Length | Washer Diam. | Inner/Outer Box Qty. |
|-------------|----------------|-------------|--------------|----------------------|
| SGDP938020K | 3.7            | 15          | 9            | 100                  |
| SGDP938025  | 3.7            | 20          | 9            | 100                  |
| SGDP938030  | 3.7            | 25          | 9            | 100                  |
| SGDP938035  | 3.7            | 30          | 9            | 100                  |
| SGDP938040  | 3.7            | 35          | 9            | 100                  |
| SGDP938060  | 3.7            | 40          | 9            | 100                  |
| SGDP938070  | 3.7            | 60          | 9            | 100                  |
| SGDP938080  | 3.7            | 70          | 9            | 100                  |
| SGDP938090  | 3.7            | 80          | 9            | 100                  |
| SGDP938100  | 3.7            | 90          | 9            | 100                  |
|             | 3.7            | 100         | 9            | 100                  |

SGDP9 - Headed Drive Pins



SGX-FB2 - Conduit Clip



| X13FB2 | Shank Diameter | Nail Length | Washer Diam. | Inner/Outer Box Qty. |
|--------|----------------|-------------|--------------|----------------------|
| X19FB2 | 3.7            | 13          | 8/9          | 100                  |
| X26FB2 | 3.7            | 19          | 8/9          | 100                  |
|        | 3.7            | 26          | 8/9          | 100                  |

| SGMWN925 | Shank Diameter | Nail Length | Washer Diam. | Inner/Outer Box Qty. |
|----------|----------------|-------------|--------------|----------------------|
| SGMWN930 | 3.7            | 25          | 14           | 100                  |
|          | 3.7            | 30          | 14           | 100                  |

SGMWN9 - Metal Washered Nails



SGX-FB2 - Conduit Clip



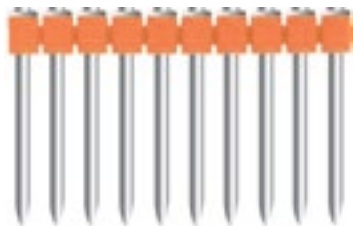
| X27HS | Shank Diameter | Nail Length | Washer Diam. | Inner/Outer Box Qty. |
|-------|----------------|-------------|--------------|----------------------|
| X32HS | 3.7            | 27          | 6            | 100                  |
|       | 3.7            | 32          | 6            | 100                  |

| SEN940 | Shank Diameter | Nail Length | Washer Diam. | Inner/Outer Box Qty. |
|--------|----------------|-------------|--------------|----------------------|
|        | 4.25           | 40          | 3.5          | 100                  |

SGEN9 - Eyelet Nails



SGX-DN - Magazine Strip Nails



| SGX13DNK | Shank Diameter | Nail Length | Head Diam. | Inner/Outer Box Qty. |
|----------|----------------|-------------|------------|----------------------|
| SGX16DNK | 3.7            | 13          | 8          | 100/3000             |
| SGX19DNK | 3.7            | 16          | 8          | 100/3000             |
| SGX22DN  | 3.7            | 19          | 8          | 100/3000             |
| SGX27DN  | 3.7            | 22          | 8          | 100/3000             |
| SGX32DN  | 3.7            | 27          | 8          | 100/3000             |
| SGX37DN  | 3.7            | 32          | 8          | 100/3000             |
| SGX42DN  | 3.7            | 37          | 8          | 100/3000             |
| SGX47DN  | 3.7            | 42          | 8          | 100/3000             |
| SGX52DN  | 3.7            | 47          | 8          | 100/3000             |
| SGX57DN  | 3.7            | 52          | 8          | 100/2000             |
| SGX62DN  | 3.7            | 57          | 8          | 100/2000             |
| SGX67DN  | 3.7            | 62          | 8          | 100/2000             |
| SGX72DN  | 3.7            | 67          | 8          | 100/2000             |
|          | 3.7            | 72          | 8          | 100/2000             |

| SMSF916 | Shank Diameter | Nail Length | Washer Diam. | Inner/Outer Box Qty. |
|---------|----------------|-------------|--------------|----------------------|
| SMSF919 | 4.1            | 16          | 14           | 100                  |
| SRN14   | 4.1            | 19          | 14           | 100                  |
|         | 4.5            | 25          | 14           | 100                  |

SGMSF9 & SGRN14 - Metal Sheet Fixing & Roofing Nails



SGPL-D - Metal Disc Powder Loads



|            | Calibre | Colour | Load strength | Inner/Outer Box Qty. |
|------------|---------|--------|---------------|----------------------|
| SGPLR6312D | 6.3/12  | Red    | High          | 100/1000             |
| SGPLG6310D | 6.3/10  | Green  | Weak          | 100/1000             |
| SGPLY6310D | 6.3/10  | Yellow | Medium        | 100/1000             |
| SGPLR6310D | 6.3/10  | Red    | Very Strong   | 100/1000             |

SGPL-M - Plastic Strip Powder Loads



|            | Calibre | Colour | Load strength | Inner/Outer Box Qty. |
|------------|---------|--------|---------------|----------------------|
| SGPLG6811M | 6.3/11  | Green  | Weak          | 100/1000             |
| SGPLY6811M | 6.3/11  | Yellow | Medium        | 100/1000             |
| SGPLR6811M | 6.3/11  | Red    | Very Strong   | 100/1000             |
| SGPLB6811M | 6.3/11  | Black  | Strongest     | 100/1000             |







**SG Fastening Systems,**

PO Box 4205, Bracknell,  
RG42 9NT, United Kingdom

**T:** +44 (0)1344 452739

**F:** +44 (0)1344 453165

**E:** [info@sungraceholdings.com](mailto:info@sungraceholdings.com)

**W:** [www.sgfasteningsystems.com](http://www.sgfasteningsystems.com)

---